



ESS-FHDV

Full HD Video Chain for
Videoscopes





ESS-300CLS

COLD LIGHT SOURCE

Elegant design, easy to use.

Lamp and air pump can be independently switched on or off.

LED 21 w metal solitary light lamp, lamp light intensity is equivalent to 300w Xenon lamp.

High Light intensity and color temperature ensure the image clarity and color reduction.

High quality air pump, low noise, long life, stable air flow pressure.

Full implementation to GB9706.1.

ESS-IP

FULL HD IMAGE PROCESSOR

With VBS, Y/C, video signal output (DVI, RGB output is optional)

The above signals can be output at the same time. (Optional patient information data entry function)

With automatic white balance function: there is a white balance button on the panel for adjustment.

Color adjustment on the panel: "R" ± 100 level, "B" ± 100 level.

Two metering modes on the panel: average metering mode and peak metering mode.

The panel has a contour highlighting function, and has a three-gear contour highlighting function for high, middle and low.

There is a 2 times magnification function on the panel.

With hot plug protection function.

Image freeze function in four images (one of which is a dynamic image)

The camera system of electronic gastroscope and colonoscope is universal.

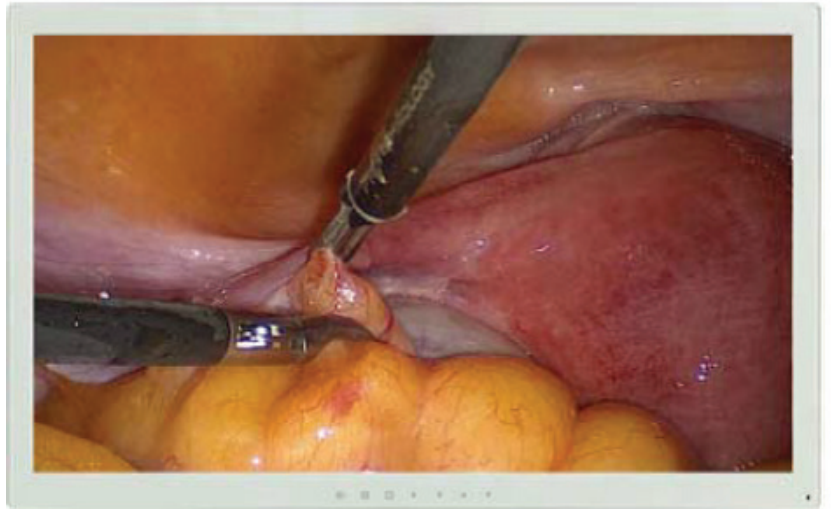




ESME26"

FULL HD MEDICAL MONITOR

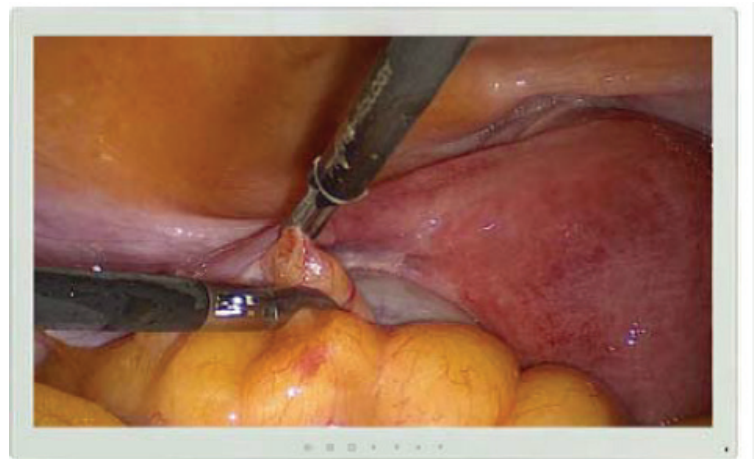
Display Size:26" ;
Support color:1.07 billion;
Resolution:1920×1080;
View angle:178° Typ.;
Brightness:450cd/m² Typ.;
Contrast:1400:1 Typ.;



ESME24"

FULL HD MEDICAL MONITOR

Display Size:24" ;
Support color:1.07 billion;
Resolution:1920×1080;
View angle:178° Typ.;
Brightness:400cd/m² Typ.;
Contrast:1400:1 Typ.;



ESME19"

FULL HD MEDICAL MONITOR

Display Size:19" ;
Support color:1.07 billion;
Resolution:1920×1080;
View angle:178° Typ.;
Brightness:300cd/m² Typ.;
Contrast:1400:1 Typ.;



ESS-TS616

ENDOSCOPE MEDICAL TROLLEY

Color: Shining silver

Material: Aluminum Alloy and Steel

With adjustable shelf

Shelf numbers could be adjusted according to the convenience

Equipped with:

- 2 endoscopes holding device,
- 1 coupler holding device;
- flexible monitor mount;
- flexible shelf for holding
- * the computer key board
- * mouse;

Easy assembly and shipment;

2 packages of cartons box,

Dimensions are: 710*700*285mm / 1145*305*235mm

GW: 50KG

* Optional PC WORKSTATION with endoscope SW

Including

- Keyboard
- mouse

